

VitaFerm®
Concept•Aid®
 with the **AMAFERM®** advantage



Unlock
 the Potential
 365 days a year

vitaferm.com

BIOZYME®
 INCORPORATED

6010 Stockyards Expressway
 St. Joseph, Missouri 64504-0428

800-821-3070 816-238-3326
 Fax: 816-238-7549

Email: support@biozymeinc.com
 www.biozymeinc.com

B1410CABrochure

WHAT'S ONE
more **WORTH?**



VitaFerm®
Concept•Aid®
 with the **AMAFERM®** advantage

VitaFerm®
Concept•Aid®

with the **AMAFERM®** advantage

The breeder booster with
 the Amafem® advantage.

- Supports first-service conception.**
- Increases milk production.**
- Supports calf vigor and growth potential.**
- Shortens calving intervals.**

Benefits Heifers

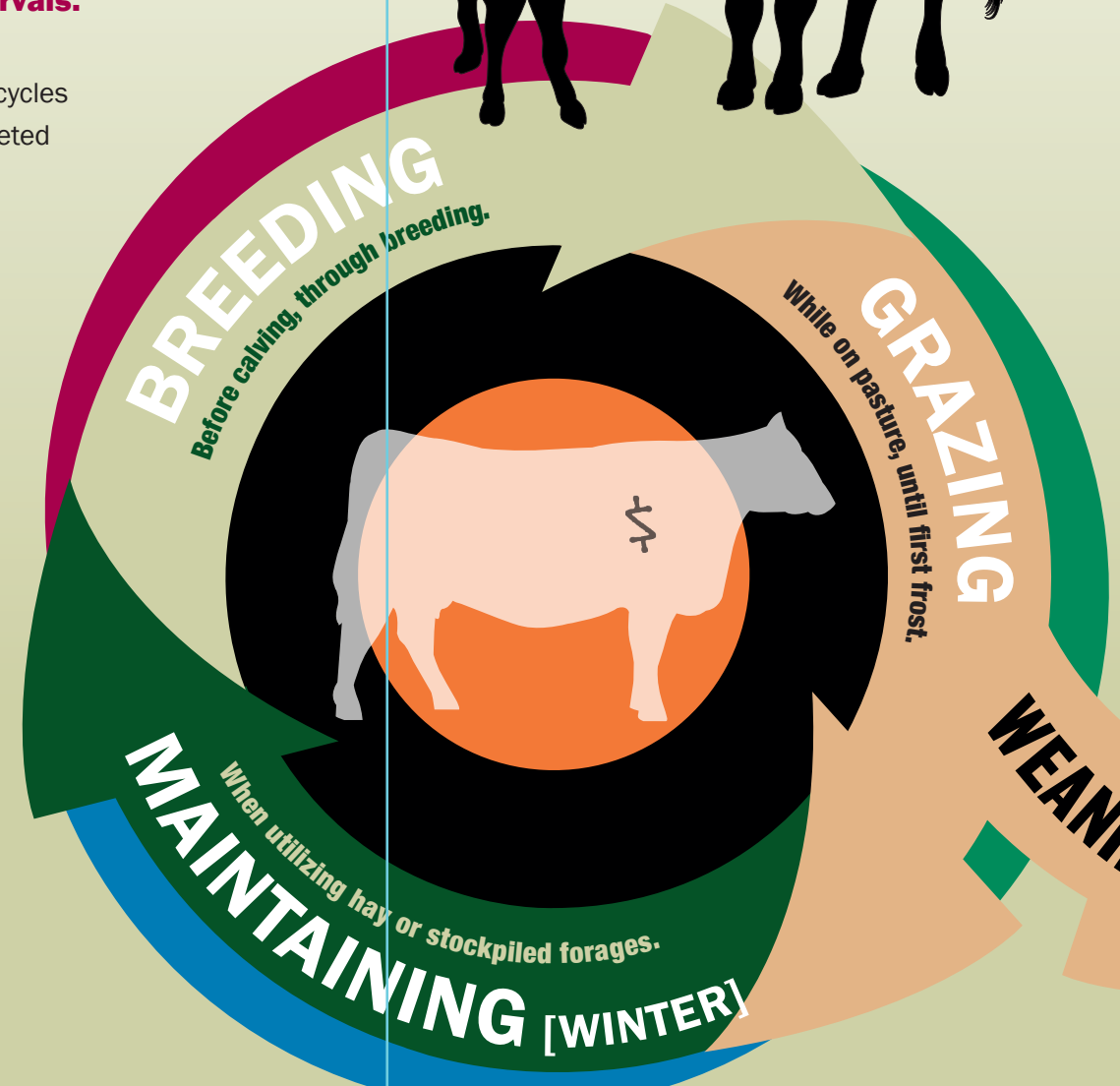
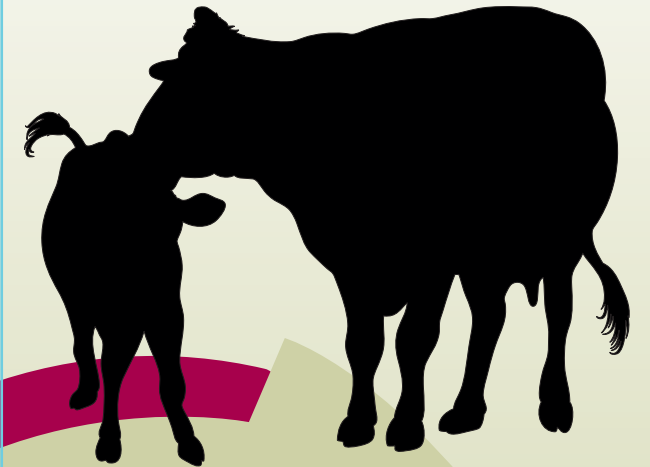
- Supports stronger heat cycles
- Puberty reached by targeted breeding dates

Benefits Bulls

- Supports semen counts and motility
- Younger bulls pass breeding-soundness tests sooner

Unlock
 the Potential
 365 days a year

biozymeinc.com



VitaFerm® Concept • Aid®

Product Selection Guide

MORE *Calves*

| | Concept • Aid® 0/S | Concept • Aid® 5/S or | Concept • Aid® 8/S | Concept • Aid® 10 | Concept • Aid® Mg/S | Concept • Aid® Pellets |
|------------------------------|-----------------------|-----------------------|-----------------------|----------------------|-----------------------|------------------------|
| Feed Rate | 4 oz. | 4 oz. | 4 oz. | 4 oz. | 4 oz. | 4 oz. |
| Calcium | 17.0% min - 19.0% max | 10.0% - 12.0% max | 10.0% min - 12.0% max | 9.5% min - 11.4% max | 7.5% min - 9.0% max | 9.5% min - 11.0% max |
| Phosphorus | - | 5.0% | 8.0% | 10.0% | 5.0% | 2.0% |
| Salt | 15.0% min - 18.0% max | 15.0% min - 18.0% max | 15.0% min - 18.0% max | - | 11.0% min - 13.0% max | 4.8% min - 5.8% max |
| Magnesium | 2.5% | 2.5% | 2.5% | 2.5% | 10.0% | - |
| Potassium | 3.0% | 3.0% | 3.0% | 3.0% | 1.0% | 4.0% |
| Organic TMs | Zn, Mn & Cu | Zn, Mn & Cu | Zn, Mn & Cu | Zn, Mn & Cu | Zn, Mn & Cu | Zn, Mn, Cu & Se |
| Copper ppm | 2,500 | 2,500 | 2,500 | 2,500 | 2,500 | 2,500 |
| Zinc ppm | 5,000 | 5,000 | 5,000 | 5,000 | 5,000 | 7,000 |
| Manganese ppm | 3,750 | 3,750 | 3,750 | 3,750 | 3,750 | 3,750 |
| Cobalt ppm | 40 | 40 | 40 | 40 | 40 | 40 |
| Vitamin A IU/LB | 400,000 | 400,000 | 400,000 | 400,000 | 400,000 | 400,000 |
| Vitamin D ₃ IU/LB | 40,000 | 40,000 | 40,000 | 40,000 | 40,000 | 40,000 |
| Vitamin E IU/LB | 800 | 800 | 800 | 800 | 800 | 800 |
| Selenium ppm | 27 | 27 | 27 | 27 | 27 | 27 |
| Amaferm | ✓ | ✓ | ✓ | ✓ | ✓ | ✓ |

*Available with CTC 3G or IGR CTC 1.4G



The Amaferm® Advantage

Amaferm is a natural feed additive with a consistent mode of action that optimizes digestive functions and feed utilization. Amaferm® has been field tested and proven to increase forage digestibility by more than 10% – increasing nutrient availability, boosting productivity and improving overall herd health and performance.



Made in USA

Which one is right for you?

This guide has been developed to assist you by suggesting products that match your operation. For further assistance, please contact one of our representatives for precise nutritional advice.

| Factors | Examples | Points | Score |
|---|---|--------|-------|
| 1. Forage Quality (choose one) | | | |
| Low | Crop residue, mature winter grazing, CRP or mature hay | 15 | |
| Moderately Low | Mid-summer warm-season pasture and hay | 10 | |
| Average | Mid-summer cool-season pasture and mid-bloom hay | 5 | |
| High | Early-season pasture, immature grass and early-bloom hay | 2 | |
| You may use a recent forage analysis to determine points. Check the phosphorus values: a P value of less than 0.14 = 15 points; 0.15 - 0.19 = 10 points; 0.20 - 0.24 = 5 points; and a P value greater than 0.24 = 2 points. | | | |
| 2. Grain Supplementation (choose one) | | | |
| None | None | 10 | |
| Low | 1 - 3 lbs. grain fed daily or 3 - 9 lbs. grain silage | 8 | |
| Medium | 3 - 6 lbs. grain fed daily or 9 - 18 lbs. grain silage | 5 | |
| High | 6+ lbs. grain fed daily or 18+ lbs. grain silage | 2 | |
| 3. Co-product Supplementation (choose one) | | | |
| Adjust wet by-products to dry basis. | | | |
| None | No DDG, gluten or high-phosphorus ingredients | 10 | |
| Low | Using co-product supplementation but less than 2 lbs. fed | 4 | |
| Medium | 2 - 4 lbs. fed | 2 | |
| High | More than 4 lbs. fed | 1 | |
| 4. Weaning Weight (milk) Potential (choose one) | | | |
| High | 205d weights more than 550 lbs. | 10 | |
| Average | 205d weights 500 - 550 lbs. | 5 | |
| 5. Technology and Herd History (choose one) | | | |
| Intensive | Use ET, AI, or improved breeding success desired | 10 | |
| Average | May use some AI and want to maintain breeding success | 5 | |
| YOUR TOTAL SCORE | | | |

Pick the product for which your total score is between the minimum and maximum.

| | Min | Max |
|---|-----|-----|
| Concept • Aid® 0/S | 15 | 34 |
| Concept • Aid® Pellets | 25 | 42 |
| Concept • Aid® 5/S or Concept • Aid® 5/S CTC 3G | 35 | 42 |
| Concept • Aid® Mg/S (when Mg is desired) | 35 | 42 |
| Concept • Aid® 8/S | 43 | 47 |
| Concept • Aid® 10 | 48 | 55 |